

STEM-EDXS System for Atomic-Sensitivity Elemental Mapping

T.C. Lovejoy¹, R.M. Stroud², N.D. Bassim², G.J. Corbin¹, N. Dellby¹, W. Hahn³, P. Hrncirik¹, M. Falke³, A. Kaepfel³, M. Rohde³, and O.L. Krivanek¹

¹. Nion Co., 11511 NE 118th St. Kirkland, WA 98034, USA

². Materials Sci. and Tech. Division, Naval Research Laboratory, Washington, DC 20375, USA

³. Bruker Nano GmbH, Am Studio 2D, 12489 Berlin, Germany

The Nion UltraSTEM aberration-corrected cold field emission scanning transmission electron microscope (AC-CFE-STEM) can focus a beam current of about 0.2 nA into an atom-sized (~1.5 Å large) electron probe at a primary energy of 60 keV (and about 1 nA at 200 keV). Using such an electron probe with an ultra-thin window silicon drift detector (SDD) of 30 mm² (0.1 sr solid angle) in a Mark I system at 60 keV allowed energy dispersive X-ray spectroscopy (EDXS) to identify individual atoms while tracking their occasional hops to neighboring lattice sites [1]. Here we report on the design and performance of a Mark II STEM-EDXS system with about 10x higher efficiency, which allows single impurity atoms to be identified even when they are very mobile.

The new system uses a window-less SDD that is oval rather than round, and has an area of 100 mm². Optimizing the shape of the objective lens polepiece and of the detector front end has allowed the detector to be brought to just 10.5 mm from the sample. Approximating the detector solid angle as 100/10.5² gives 0.91 sr, accounting for the planar geometry of the detector gives 0.7 sr. Making the detector window-less provides a further significant gain in quantum efficiency, especially for low-energy X-ray emission lines. The detector is mounted on a Nion UltraSTEM200 set up for voltages ranging from 40 to 200kV, and operated at 60 kV for this work.

To prevent sample contamination due to mobile hydrocarbons, or etching due to water vapor permeating through single O-rings and condensing on the sample, the microscope's column uses only metal seals and is bakeable to 140 C. The detector itself cannot be baked above 100 C, and it therefore needs to be removed from the column before baking. This is accomplished by having a gate valve that allows the detector to be isolated and removed without venting the column (Fig. 1). The internal (non-bakeable) volume of the detector is pumped with an ion pump and is maintained in the 10⁻⁷ torr range. The vacuum next to the sample is kept in the low 10⁻⁹ to high 10⁻¹⁰ torr range by a separate ion pump. When the detector is retracted, the two vacuums are separated by the gate valve; when the gate valve is opened and a motor drives the detector in, an O-ring sealing on the detector tube maintains the separation (Fig. 1). With the detector in the inserted position and cooled, the resultant sample-level vacuum is high and clean enough for room temperature 60 keV imaging of graphene to be possible without significant contamination or etching.

To reduce the impact of spurious system peaks without comprising system performance or the geometric solid angle with a collimator, the objective lens polepieces have been covered by thin copper caps, and Be-Cu gimbals are used in the double-tilt sample holder. For a sample mounted on a Cu grid and clamped with a Be-Cu spring washer, there is primarily just one type of system peaks: Cu, whose real concentration can be readily characterized by EELS. Figure 2 shows a spectrum from a 54nm thick NiO calibration sample on a Molybdenum grid acquired at 60 keV with ~440 pA. Peaks from Ni, O, Moly, and Cu dominate; minor system peaks of Ti, Si, and Al remain.

Figure 3 shows an example of detecting a mobile single atom of Ca on few-layer amorphous carbon, using tracking methodology as in [1], but with a significantly lower beam current (46pA), to mitigate the atom's greater mobility, and shorter time. There were 22 Ca K-line counts in 35s of tracking, during which the beam only spent about 1 sec close enough to the Ca atom to ionize it. At 35 s, the atom left the field of view of the tracking window. Similar count rates were recorded for other types of single atoms present in the sample, including silicon and sulphur. This demonstrates that the new system allows EDXS analysis to be carried out with single atom sensitivity for many elements in the periodic table, on real-world samples that change under the electron beam. See [2] for a practical application to heteroatom mapping in nanodiamond of extra-terrestrial origin.

References

1. T.C. Lovejoy et al., Appl. Phys. Lett. **100** 154101 (2012)
2. R.M. Stroud et al., (this meeting)

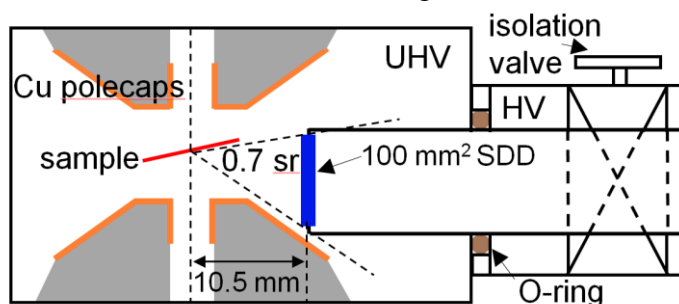


Fig. 1 Schematic drawing of 100 mm² SDD chip 10.5 mm from sample showing copper polecaps over the polepieces, isolating O-ring between the baked-ultra-clean sample vacuum (UHV) and non-baked detector vacuum (HV), isolating gate valve for when detector is retracted and approximate take-off angles to detector extremes.

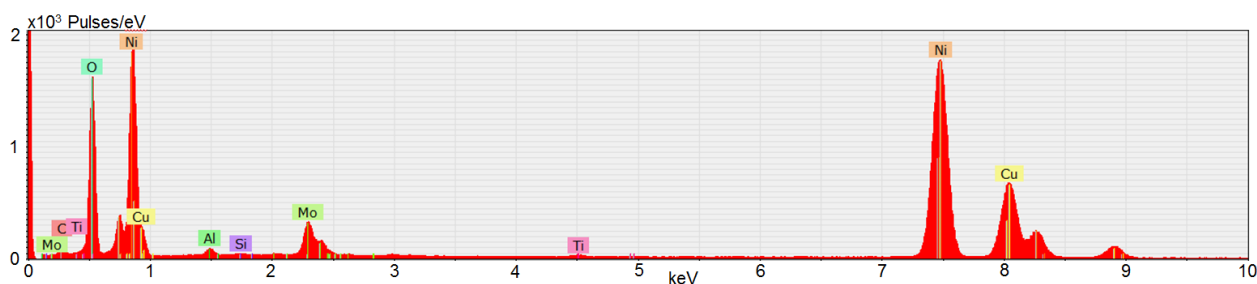


Fig. 2 Spectrum from NiO on Mo grid showing primarily Cu system peaks.

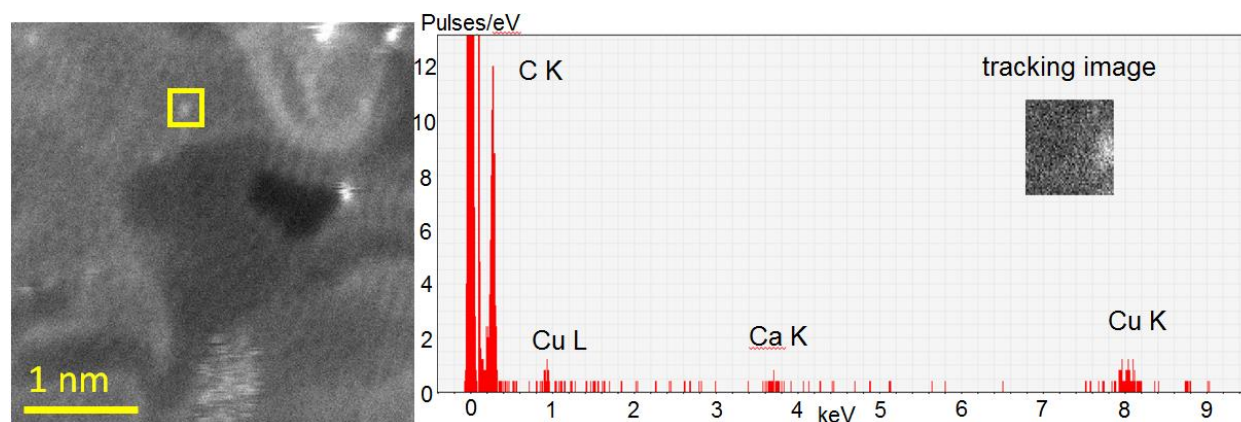


Fig. 3 (left) overview dark-field image of few-layer amorphous carbon showing several different species of isolated impurity atoms. The highlighted atom was tracked using the window shown (inset) to produce an X-ray spectrum (right) with 22 Ca K-line counts in 35 s (60 kV, 46 pA).